

TAB MOTION MONOBLOCK BATTERIES



TAB

TAB Motion Pasted
TAB Motion Tubular
TAB Motion AGM
TAB Motion GEL

TAB Motion Pasted

is a flooded small traction battery with flat grid plates.

ADVANTAGES:

- + excellent vibration resistance,
- + high rate discharge capability,
- + high performance in difficult working conditions,
- + economical and reliable ...

APPLICATIONS:

- + wheelchairs,
- + truck applications,
- + caravans and motorhomes,
- + battery driven carts,
- + boats,
- + cleaning machines,
- + solar systems ...

CHARGING:

- + TAB Motion batteries can be recharged with 50 Hz or HF charger.
The charging profile is Wa; WoWa, IUla; WUIa acc. to DIN 41773 and 41774.



TAB Motion Pasted

Number of cycles: 300 (IEC / EN 60254-1 / 25 °C)

TAB ID	Short code	C100 (Ah)	C20 (Ah)	C5 (Ah)	Box Type	Voltage (V)	LxWxH (mm)	BHD	Layout	PCS per Pallet (EUR/CNT)	Weight (kg)
207860	50 P	70	60	50	L2	12	242x175x190	B13	0	57/90	16,4
207875	60 P	80	75	60	L3	12	278x175x190	B13	0	48/80	19,0
207905	85 P	115	105	85	L5	12	353x175x190	B13	0	36/60	23,7
206895	80 P	115	105	80	59518	12	312x176x212	B0	0	36/60	22,3
205105	105 P	125	120	105	60528	12	344x172x212/234	B0	0	36/48	26,7
206125	110 P	155	140	110	62512	12	344x172x262/284	B0	0	24/36	31,8
205835	110 P MAC	150	140	110	MAC 110	12	509x175x182/208	B0	3	24/40	34,3
205880	150 P	190	180	150	B	12	512x222x194/221	B0	3	21/28	43,7
205925	190 P	245	225	190	C	12	518x273x214/240	B0	3	18/24	56,1

TAB Motion Tubular

is a flooded small traction battery with robust tubular positive plates.

ADVANTAGES:

- + premium tubular plate construction with free electrolyte ensures long operating life,
- + high rate discharge capability,
- + for applications which are used in difficult working conditions,
- + reliable and durable - gives 1200 cycles performance ...

APPLICATIONS:

- + golf carts,
- + cleaning machines,
- + wheelchairs,
- + mobile elevating work platforms,
- + electric elevating platform trucks,
- + solar system ...

CHARGING:

- + TAB Motion batteries can be recharged with 50 Hz or HF charger.
The charging profile is Wa; WoWa, IUla; WUIa acc. to DIN 41773 and 41774.



TAB Motion Tubular

Number of cycles: 1200 (IEC / EN 60254-1 / 25 °C)

TAB ID	Short code	C100 (Ah)	C20 (Ah)	C5 (Ah)	Box Type	Voltage (V)	LxWxH (mm)	BHD	Layout	PCS per Pallet (EUR/CNT)	Weight (kg)
113812	55 T	65	60	55	L3	12	278x175x190	B13	0	48/80	18,9
131812	90 T	115	110	90	59518	12	303x175x208/229	B1	0	36/48	28,7
101812	95 T	130	115	95	60528	12	344x172x212/234	B0	0	36/48	30,4
100812	120 T	155	140	120	62512	12	344x172x262/284	B0	0	24/36	37,5
112812	145 T	180	165	145	B	12	512x222x194/220	B0	3	21/28	47,5
8372395	Golf Cart T	240	220	180	Golf Cart	6	244x190x270/281	B0	0	36/48	31,5
8380967	Golf Cart TS	270	250	210	Golf Cart	6	244x190x270/281	B0	0	36/48	32,4

TAB Motion AGM is a VRLA (Valve Regulated Lead Acid) battery produced in Absorption Glass Mat technology according to EN 60254-1 standard.

ADVANTAGES:

- + 30 % higher energy density in comparison with flooded battery,
- + very low selfdischarge rate,
- + no corrosive exhaust (applicable for food industry and pharmacy),
- + robust design, stroke and vibration resistant,
- + low charging factor (1,08) lowers energy consumption,
- + electrolyte is kept immobilized in AGM (prevents leakage if housing is broken),
- + maintenance free - install and forget,
- + high starting performance ...

APPLICATIONS:

- + caravans, mobile homes,
- + boats,
- + wheelchairs,
- + cleaning machines,
- + alarm systems,
- + UPS and PV systems ...

CHARGING:

- + chargers with IU and IUa charging characteristic
- + cycling regime IU, WU / U = 14,4 - 14,8 V
- + continuous charging IU, WU / U = 13,5 - 13,8 V



Number of cycles: 400 (IEC / EN 60254-1 / 25 °C)

TAB Motion AGM

TAB ID	Short code	C100 (Ah)	C20 (Ah)	C5 (Ah)	Box Type	Voltage (V)	LxWxH (mm)	BHD	Layout	PCS per Pallet (EUR/CNT)	Weight (kg)
172060	45 AGM	65	60	45	L2	12	242x175x190	B13	0	57/90	17,9
172070	55 AGM	75	70	55	L3	12	278x175x190	B13	0	48/80	20,5
172080	60 AGM	85	80	60	L4	12	315x175x190	B13	0	36/60	23,2
172090	70 AGM	100	95	70	L5	12	353x175x190	B13	0	36/60	26,0

TAB Motion GEL is a VRLA (Valve Regulated Lead Acid) battery which consists of Ca grid plates in special alloy with gel electrolyte. Casing is made of reinforced PP material. All this makes the battery reliable, maintenance-free all-rounder.

ADVANTAGES:

- + completely maintenance free - install and forget,
- + electrolyte is kept immobilized in GEL (prevents stratification of electrolyte, protected against spilling),
- + self-discharge less than 2 % a month which means less difficulties during transport and storage, depends on temperature,
- + no corrosive exhaust (applicable for food industry and pharmacy),
- + robust design, stroke and vibration resistant ...

APPLICATIONS:

- + caravans and mobile homes,
- + boats,
- + cleaning machines,
- + electrical vehicles,
- + solar systems,
- + UPS systems ...

CHARGING acc. to DIN41773 (IU-characteristic):

VOLTAGE CHARGING at room temperature

- + cyclic application: 14,30 – 14,50 V
- + stationary application: 13,40 – 13,70 V
- + temperature compensation 30 mV/K

CURRENT CHARGING

- + maximum current is 30 % capacity C20 (e.g. C20 = 100Ah, I_{max} = 30A)



Number of cycles: 700 (IEC 60254-1)

TAB Motion GEL

TAB ID	Short code	C100 (Ah)	C20 (Ah)	C5 (Ah)	Box Type	Voltage (V)	LxWxH (mm)	BHD	Layout	PCS per Pallet (EUR/CNT)	Weight (kg)
215060	50 Gel	70	60	50	L3	12	278x175x190	B13	0	48/80	21,3
215080	70 Gel	90	80	70	L5	12	353x175x190	B13	0	36/60	26,2
215085	75 Gel	100	85	75	60528	12	352x175x211/232	B1	0	36/48	29,8
215105	105 Gel	140	125	105	62512	12	345x173x264/285	B0	0	24/48	39,1
215150	130 Gel	165	150	130	B	12	514x223x195/222	B0	3	21/28	52,2
215210	180 Gel	235	210	180	C	12	518x273x214/240	B0	3	18/24	72,0
215180	180 Golf Cart Gel	235	210	180	Golf Cart	6	243x189x252/273	B0	0	24/36	30,4

TAB Motion in flooded and VRLA technology is a range of block batteries for all applications in small traction and leisure segment.

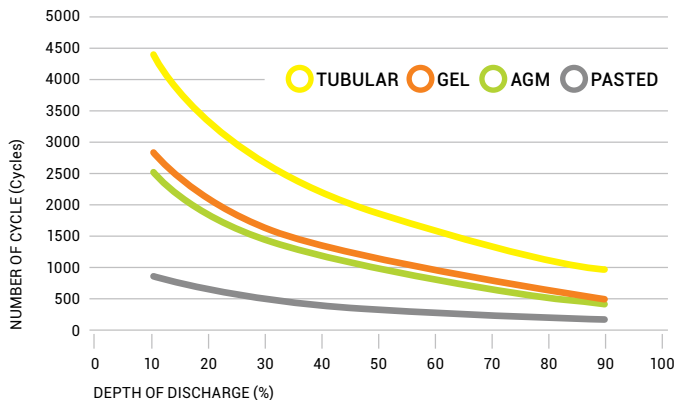
TAB Motion Pasted and **TAB Motion Tubular** are flooded batteries while **TAB Motion AGM** and **TAB Motion Gel** are gas recombination batteries. Both ranges have highest cyclic durability.

OPERATION:

To achieve optimal operating life avoid deep discharges. Never leave battery in a discharged state. Electrolyte level for flooded batteries has to be checked regularly and then filled with demineralized water (DIN43530-4).

The single point automatic watering system can be considered on some types. Valve regulated batteries with absorbed electrolyte (AGM) or gel electrolyte are sealed for life and need no watering.

DoD - Number of Cycles



V15-03-2018-EN (atelje jk®)

BOX TYPE

(L×W×H)

L2
242×175×190



L3
278×175×190



L3 GEL
278×175×190



L4
242×175×190



L5
353×175×190



L5 GEL
353×175×190



59518 (80P)
312×176×212



60528
344×172×212/234



60528 GEL
352×175×211/232



62512
344×172×262/284



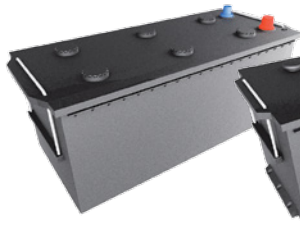
62512 GEL
345×173×264/285



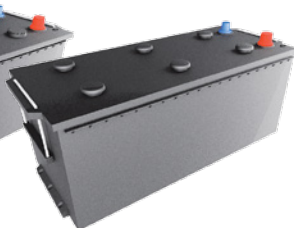
MAC 110
509×175×182/208



B
512×222×194/221



B GEL
514×223×195/222



C
518×273×214/240



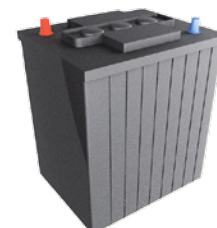
C GEL
518×273×214/240



GOLF CART
244×190×270/281

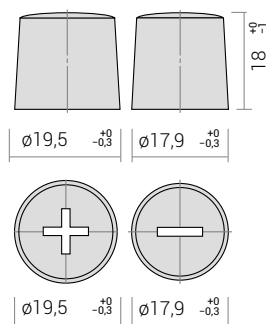


GOLF CART GEL
243×189×252/273

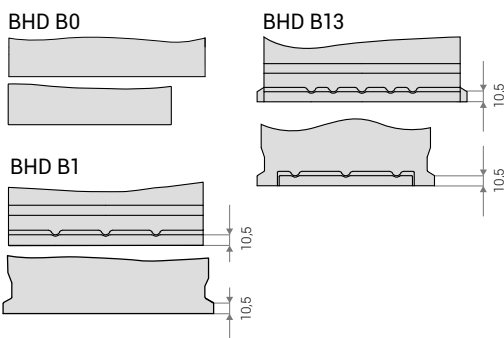


TERMINALS

Terminal 1



BASE HOLD DOWN



LAYOUT

